

Designed for Harsh Environments with high temperature composite base and stainless-steel stud and nut hardware for maximum protection from corrosion.

58 Max Vdc Rating easily supports 12, 24, 36, and 48 nominal Vdc systems.

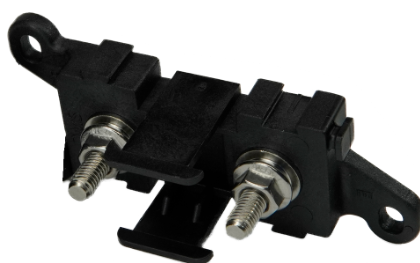
Flexible Protective Cover ensures full 360 degree access for cables/terminals to attach to fuse studs, while preventing inadvertent short circuits.

Serrated Flange Lock Nuts improve resistance to cable terminal loosening in high-vibration environments.

Stackable Side by Side design via interlocking dove-tail features in the composite base.

Supports Common Input Busbars when stacked side-by-side due to longer input stud lengths.

Wire Tie Slots in Base allow optional secure tie-wrap mounting.



Stackable Side-By-Side With Link Busbar Option



Protects Electrical Circuits from short-circuit and over-current events, preventing wire insulation overheating and subsequent destruction.



High Tolerance Mounting Hole Provisions ensure simple and fast installation with a wide variety of mounting plate preparation approaches.

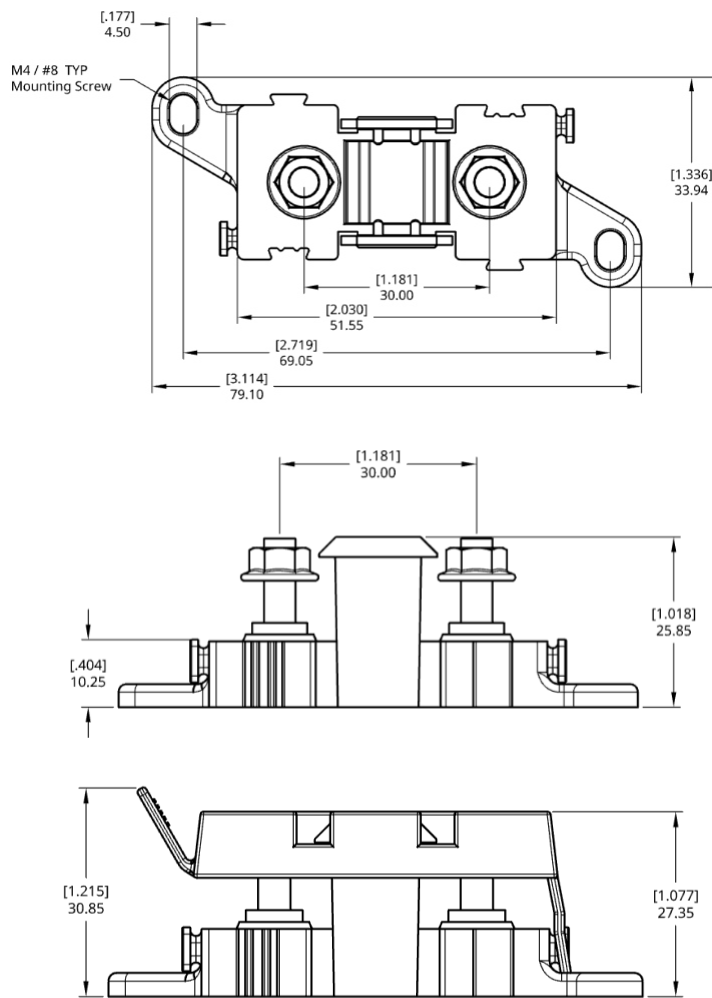


Bullet-proof Construction: High-temp materials and stainless-steel fasteners for harsh environment applications.

4

4 Year Industry Leading Warranty

Product Dimensions



Material Specifications

Flexible Cover	Silicone Rubber
Base	PPS, UL 94-V0
Power I/O Terminal Material	Stainless Steel

Physical Specifications

Max Operating Temperature	85 C / 185 F
Min Operating Temperature	-40 C / -40 F
Maximum I/O Stud Temperature	200 C / 392 F
RoHs Compliant?	Yes
Input / Output Stud Size	M5 x 0.8
Maximum I/O Stud Torque	5 N-m (44 in-lbs)
Mounting Hole Screw Torque	2.5 N-m (22 in-lbs)
Max Fuse Voltage Rating	48 Vdc Nominal 58 Vdc Maximum
Available Linked Positions)	2-7 Positions

Part Numbers

	Retail Pack	Bulk Pack
MIDI Fuse Block with Black Cover	3810	3810B
Midi Fuse Block Linked - 2x	3810-02	3810-02B
Midi Fuse Block Linked - 3x	3810-03	3810-03B
Midi Fuse Block with Link Bar - 2x	3812-02	3812-02B
Midi Fuse Block with Link Bar - 3x	3812-03	3812-03B
Part Numbers Scheme Available Up To 7 Linked Fuse Blocks		

Related Circuit Protection Options

3820 AMG/Mega Fuse Holder



*Fuse Not Included

- MEGA Version Capable Of Adjacent Stacking, Creating A Compact Solution
- Marine Rated Construction w/Stainless Steel Hardware
- Protective Cover Prevents Electrical Shorts

3603 Series MRBF Terminal Fuses Available: 30A-300A



- Compact MRBF Fuse Holders Provides High Current (30 - 300 Amp) Protection In Tight Space Constraints
- Seamlessly Connects To Battery Posts, XD Relay Input/Output Terminals, Or High Amp Distribution Busbars
- Ignition Protected When Used With Egis Mobile Electric™ MRBF Terminal Fuses
- Insulating Cap Prevents Accidental Electrical Contact

3601 MRBF Single Terminal Fuse Block



3602 MRBF Dual Terminal Fuse Block



4730 Series Short Stop Circuit Breakers

- 5 - 50 Amp Continuous Current Rating Options
- Harsh Environment Design Ideal For Marine & Vehicle Electrical Systems
- Locking Nuts For Withstanding Vibration

Email our team for more information: sales@egismobile.com



www.egismobile.com
360.768.1211
Bellingham, WA U.S.A

